

BIONICLE® STARS

SKRALL

7136

www.BIONICLE.com

LEGO





STARS



7116



7117



7137



7138



7136



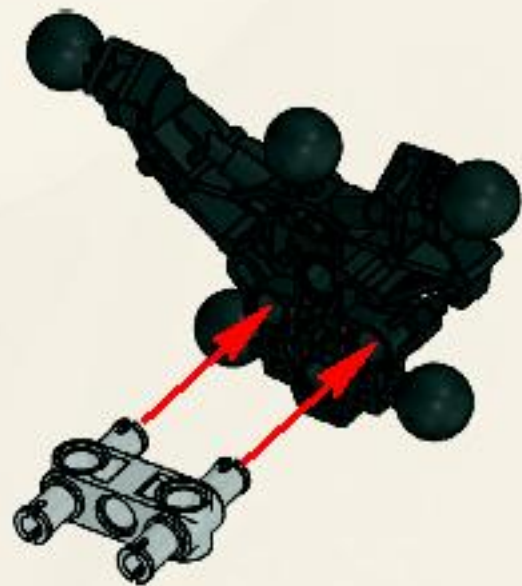
7135



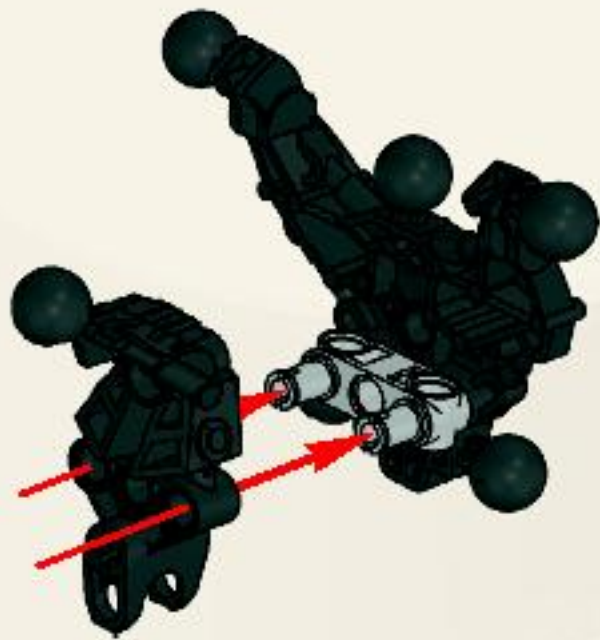
1



2



3



1



2

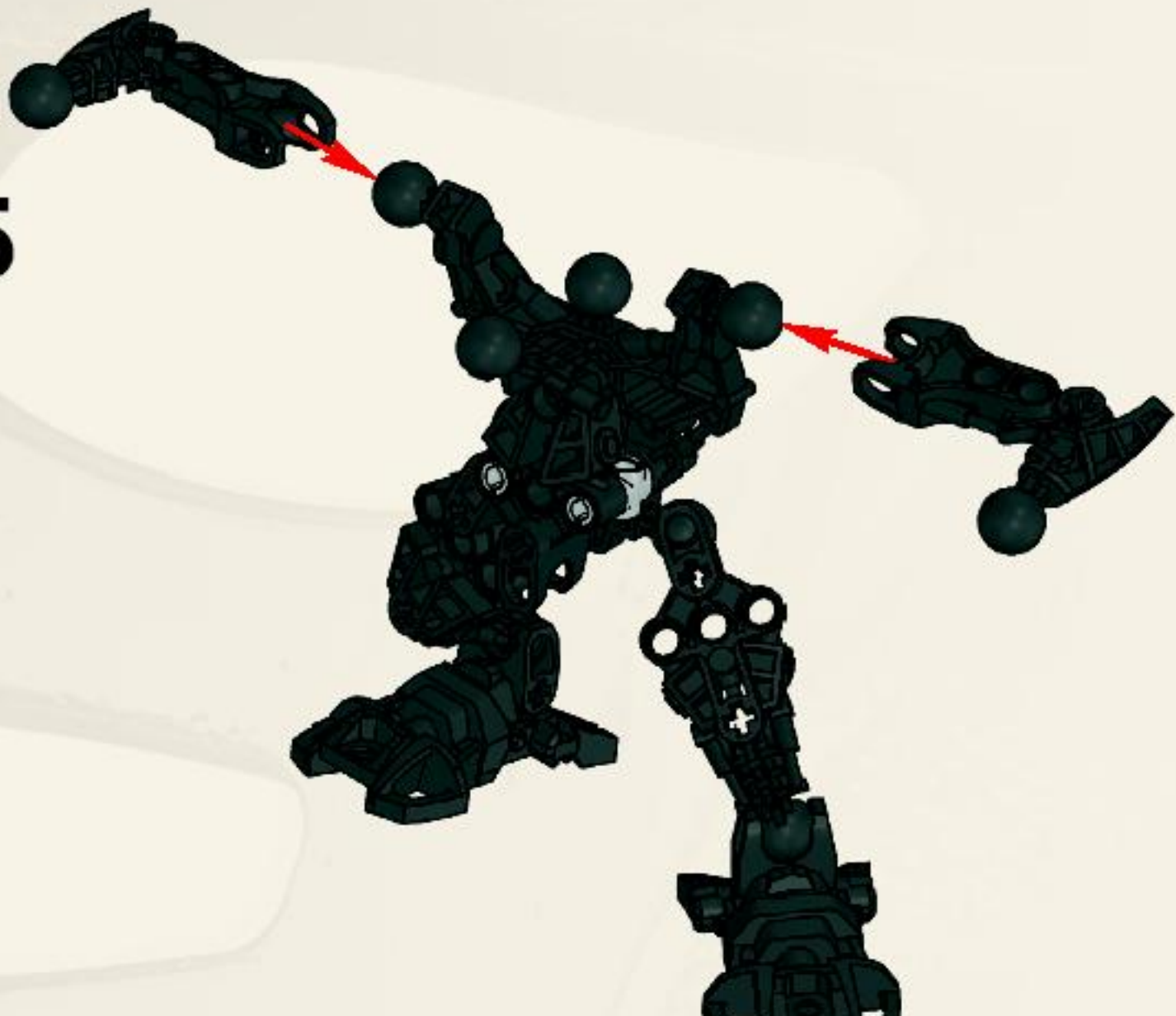


2x

4



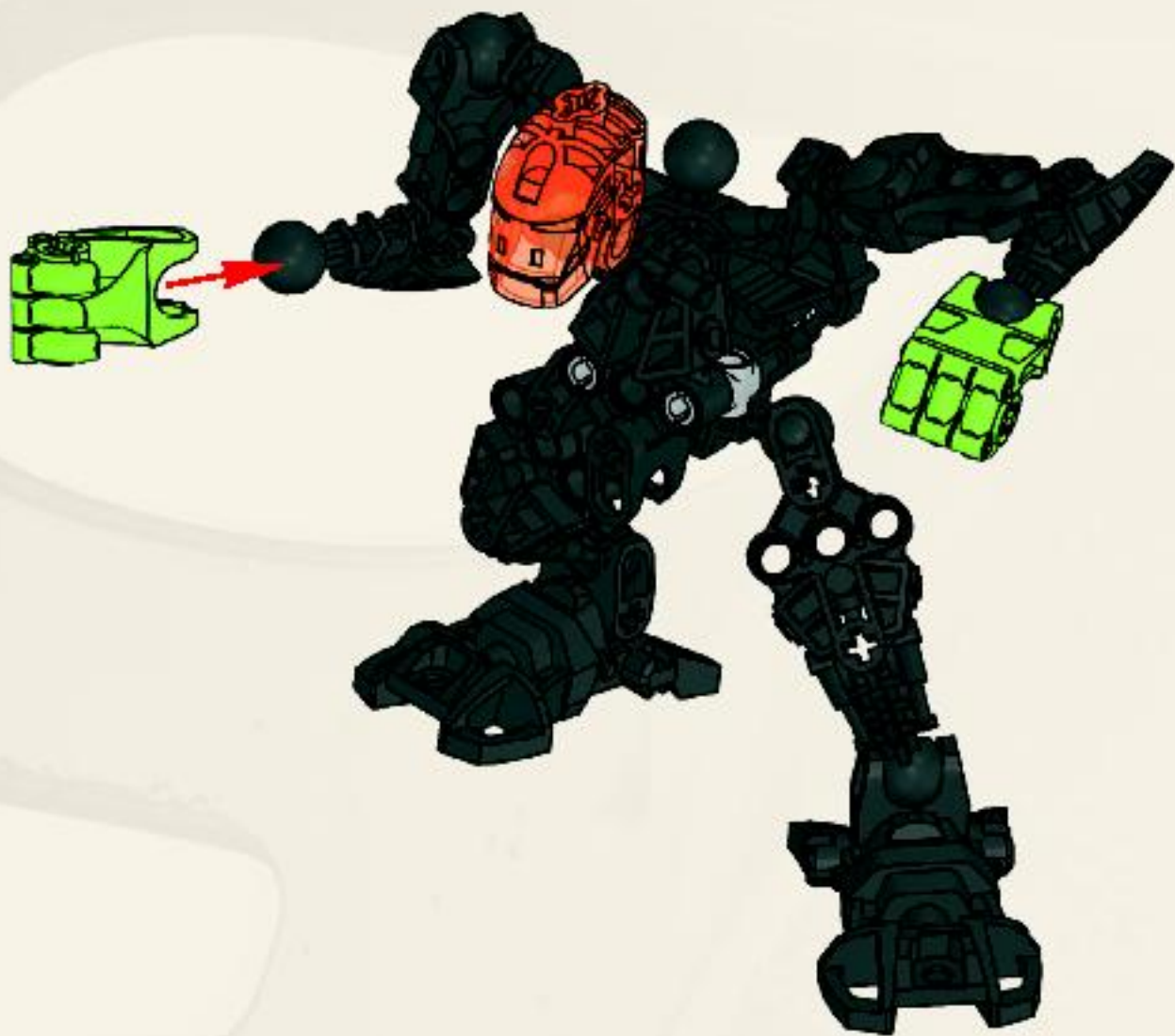
5

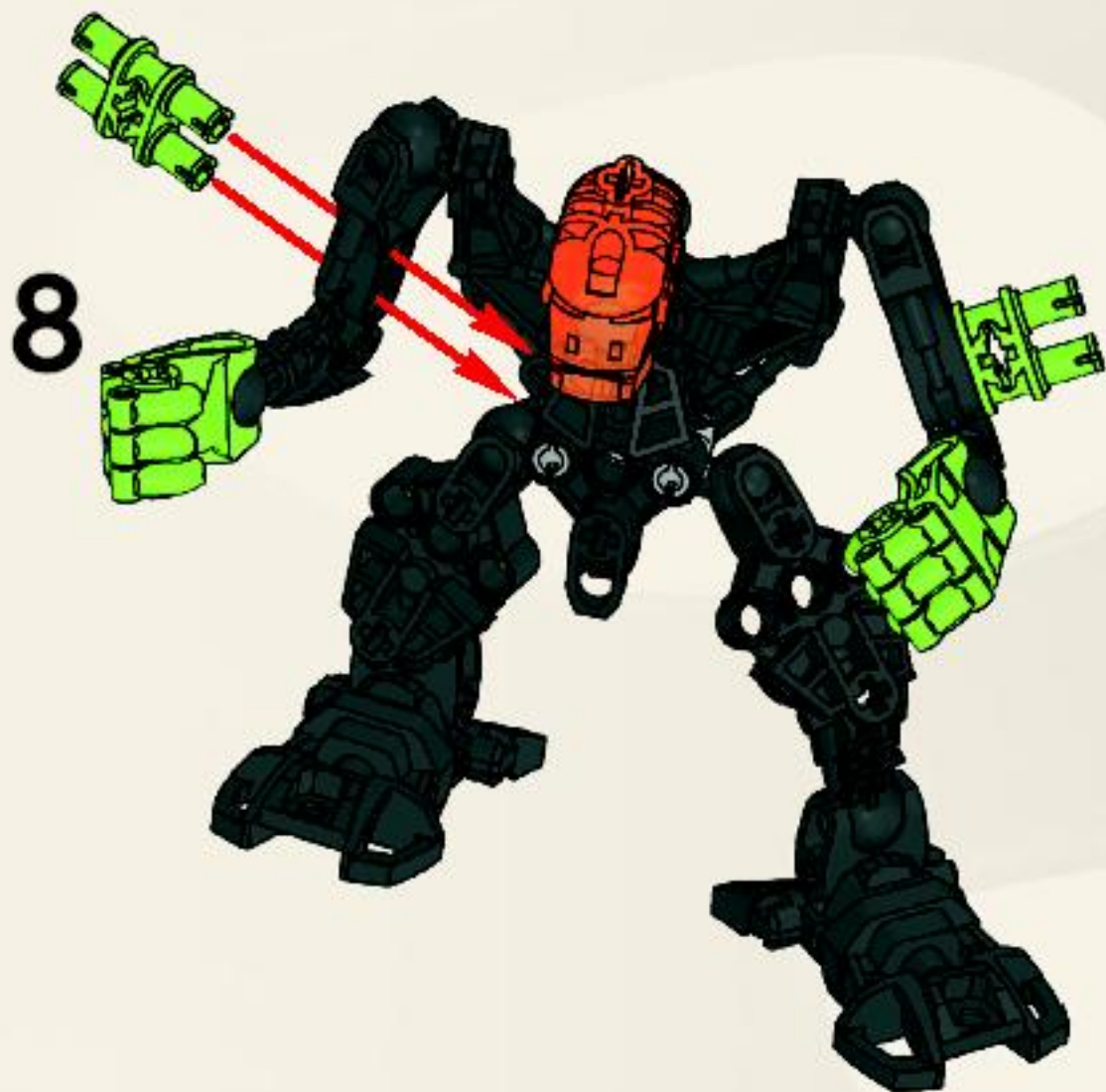


6



7

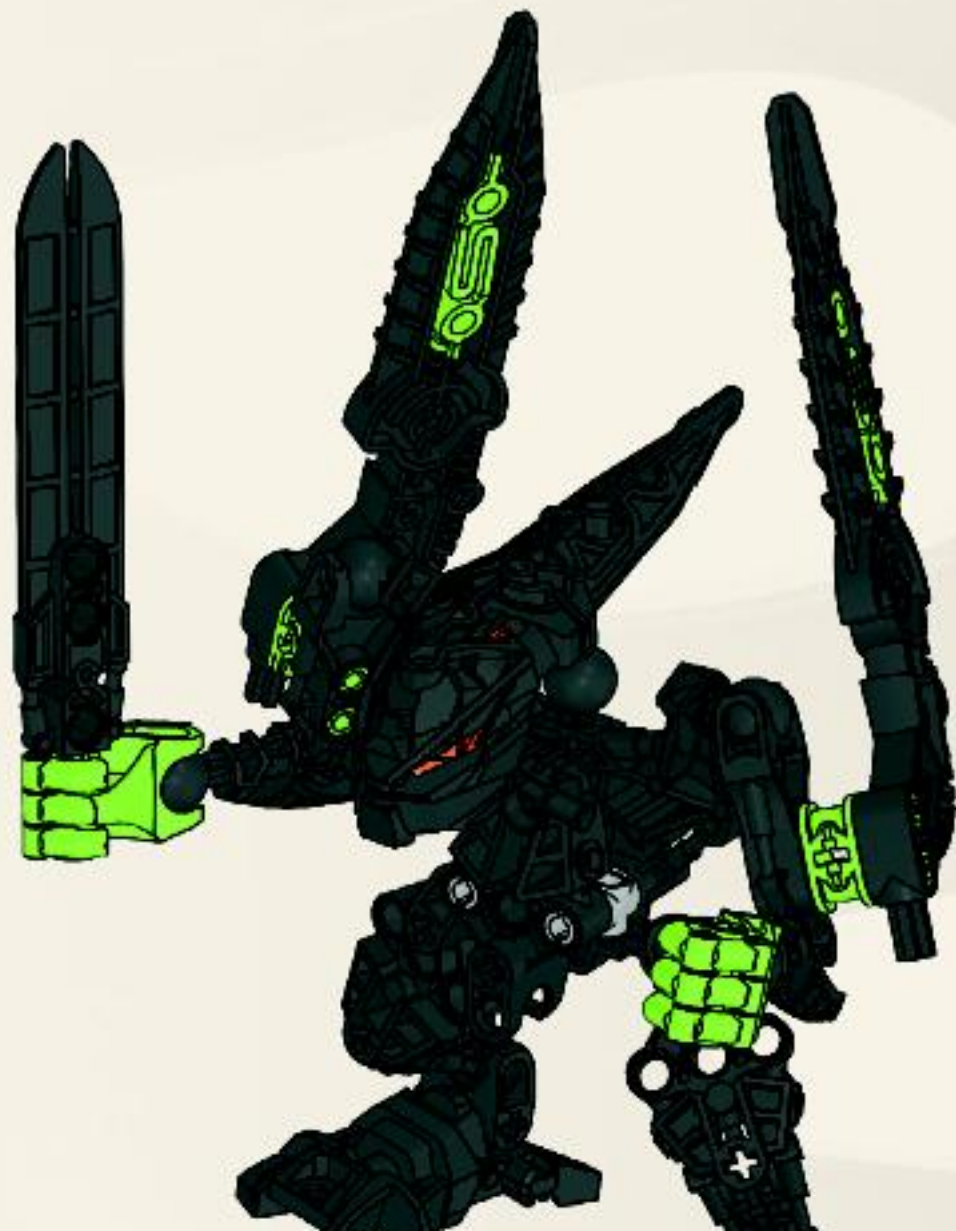




9



10





2x
4537504



2x
4519244



2x
4565616



2x
4584626



2x
4526578



1x
4569401



3x
4540310



2x
4539214



1x
4541817



1x
4225033



Customer Service

Kundenservice

Service Consommateurs

Servicio Al Consumidor

www.lego.com/service or dial



00800 5346 5555 :



1-800-422-5346 :



1x
4520075



1x
4540702



1x
4293405

LEGO

**BEN
10
ALIEN
FORCE**

8409



8517



8410

8518



8411



8519



ben10.LEGO.com

CN
CARTOON NETWORK



WIN!

 www.LEGO.com

Go to www.nielsen.com/LEGO
to fill out a survey for a chance
to win a cool LEGO® Product.
No purchase necessary.
Open to all residents where not prohibited.



www.nielsen.com/LEGO

GEWINNE!

Nimm an der Umfrage auf www.nielsen.com/ LEGO teil und hab die Chance ein cooles LEGO Produkt zu gewinnen! Die Teilnahme am Gewinnspiel führt zu keinerlei Kaufverpflichtungen. Teilnahme in allen nicht ausgeschlossenen Ländern möglich.

WIN!

Ga naar www.nielsen.com/LEGO, vul een enquêteformulier in en maak kans op een cool LEGO® product. Geen aankoopverplichting. Iedereen mag deelnemen, uitgezonderd ingezetenden van landen waar een enquêteverbod geldt.

GAGNE!

Visite www.nielsen.com/LEGO pour répondre à un questionnaire et avoir une chance de gagner un produit LEGO® très cool! Aucune obligation d'achat. Ouvert à tous les résidents des pays autorisés.

当てよう!

www.nielsen.com/LEGO にアクセスして、アンケートにご記入ください。当選者にはレゴ製品を差し上げます。お買い上げの義務はありません。禁止されていない限り、すべての年齢に公開いたします。

CARTOON NETWORK, the logo BEN 10 ALIEN FORCE and all related characters and elements are trademarks of and © 2010 Cartoon Network. LEGO and the LEGO logo are trademarks of the LEGO Group. ©2010 The LEGO Group. ©2010 LucasFilm Ltd. & TM. All rights reserved. Used under authorization.